

Aro Arataki Children's Centre
Greenlane Clinical Centre
212 Greenlane Clinical Centre
Private Bag 92189
AUCKLAND 1142

15th November 2023

Kia ora whānau

2024 Fee Schedule

Providing the highest quality of education and care relies on our continued commitment to investing in our people and our centre. On 1 January 2024 we opt into Extended Pay Parity, which provides a stepped pay scale for certificated teachers and centre managers with minimum rates of pay at each step. You can find out more on the Ministry of Education website or www.education.govt.nz and search Early Learning Extended Pay Parity.

We have also committed to reviewing pay rates for all our team, including non-certificated teachers and support people. It is important to us that everyone is paid reasonably and appropriately and has access to learning and development opportunities. Retaining our skilled, experienced people is vital to our positive workplace culture, and for your tamariki to see familiar faces every day.

In addition, like every household and business, we are also managing the rising costs of food, cleaning supplies, and other essentials for running our centre.

Effective from Monday 1 January 2024, our revised fee schedule will apply. You will find the schedule and our terms of trade in a separate document as part of this communication. Please note that you will need to adjust any payments that are already set up from the week commencing Monday 1 January 2024.

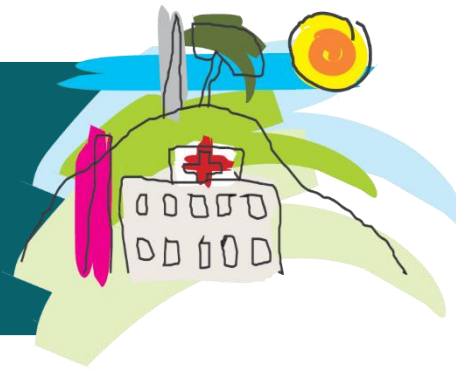
Thank you for being part of our centre community. Continuing to develop a thriving centre with a healthy future for whānau is our highest priority.

Ngā mihi maioha – thank you with our appreciation.

Ellie Chung
Centre Director
021 391953
Elliec@adhb.govt.nz

Fee Schedule

Aro Arataki Children's Centre



From 01 January 2024

Under 3-year-old children

Daily rate 2-5 days

2 days

3 days

4 days

5 days

Family Pays Base Fee

\$ 75.00

\$150.00

\$225.00

\$300.00

\$375.00

Over 3-year-old children

Daily rate 2-5 days

2 days

3 days

4 days

5 days

Family Pays Base Fee Less 20 Hours ECE Subsidy

\$ 55.00

\$ 110.00

\$165.00

\$220.00

\$275.00

Please note:

A 'day' at Aro Arataki refers to a consecutive 9 hour period between our hours of opening.

The start and end times are negotiated with our office manager at enrolment and reviewed together as needs change.



Haere Mai Welcome | Manaaki Respect | Tūhono Together | Angamua Aim High

Te Whatu Ora
Health New Zealand